



Naval Facilities Engineering Command

Bob Silver, P.E., NAVFAC



Dept of Navy Military Construction Program

7 December 2010

Bob Silver, P.E.
Director, Military Construction Programs

NAVFAC: Major Initiatives/Programs

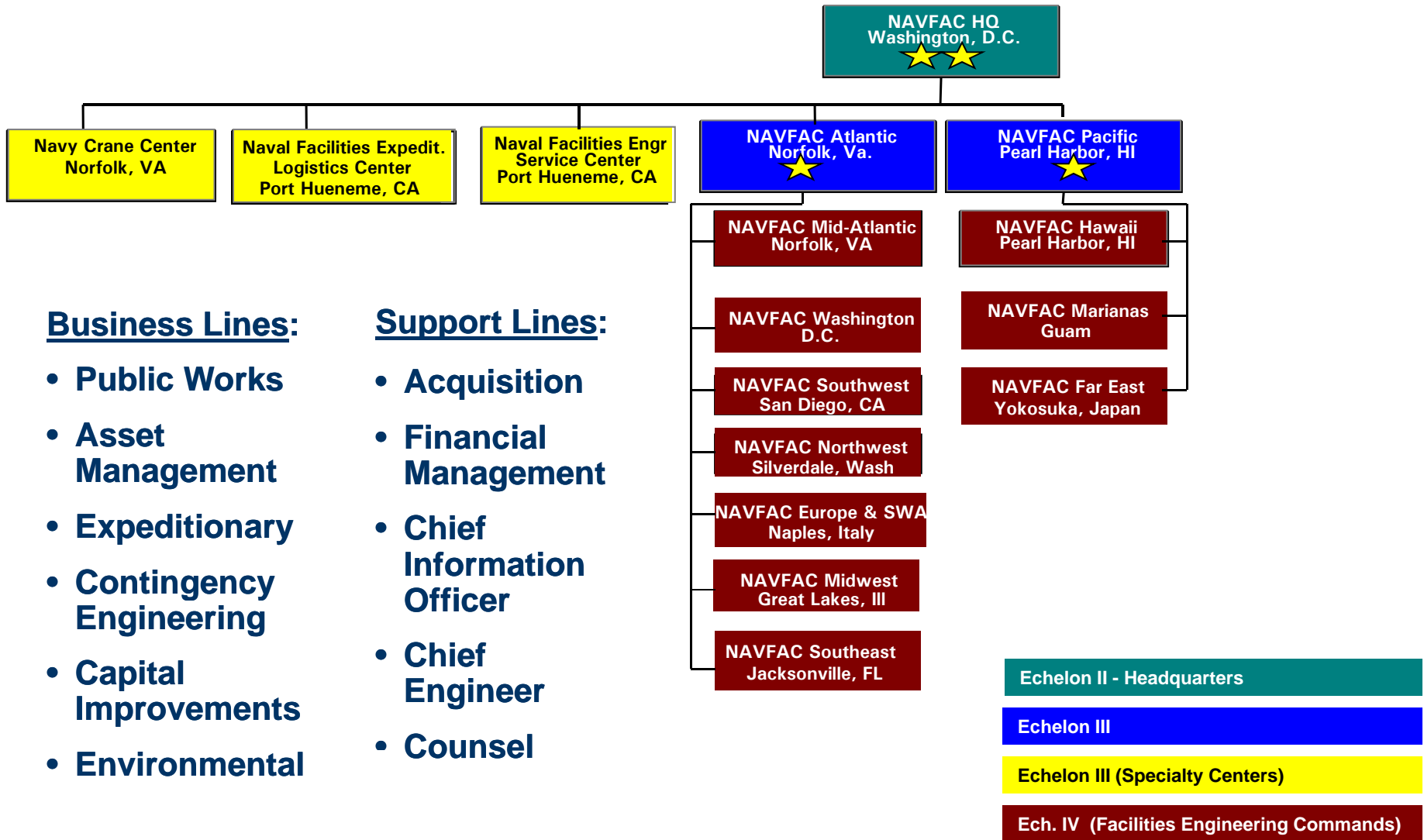
- Navy's Ashore Infrastructure Lifecycle Management Program
- BRAC 05 Execution/Bethesda
- Guam/DPRI
- USMC Grow the Force
- American Reinvestment & Recovery Act
- Directly engaged in OCO as IAs to Joint staffs and Supported Commands
- \$5B+ Annual MILCON Execution
- 6 Hospital Projects Simultaneously (FY11)
- NECE COO & NECC Lead SYSCOM
- Disaster Recovery and Humanitarian Assistance (e.g., Haiti)
- Theater Security Cooperation Support
- Energy



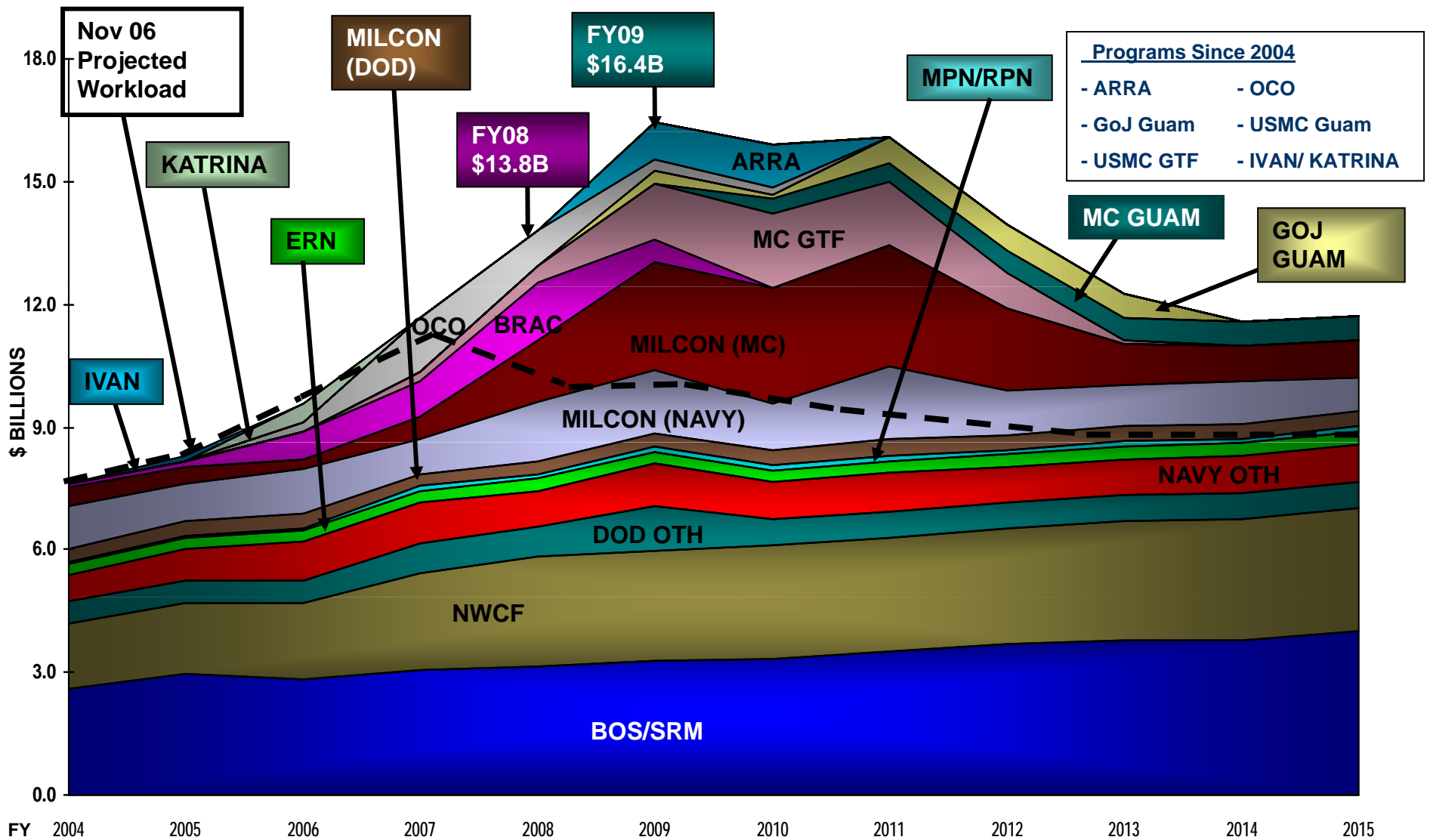
Leaning Forward to Support the Warfighter



*We are the war fighter's engineering professionals.
 Fleet, Fighter and Family focused, innovative, surge enabled,
 ever faster, and committed to continuous cost reduction.*



NAVFAC Program of Record

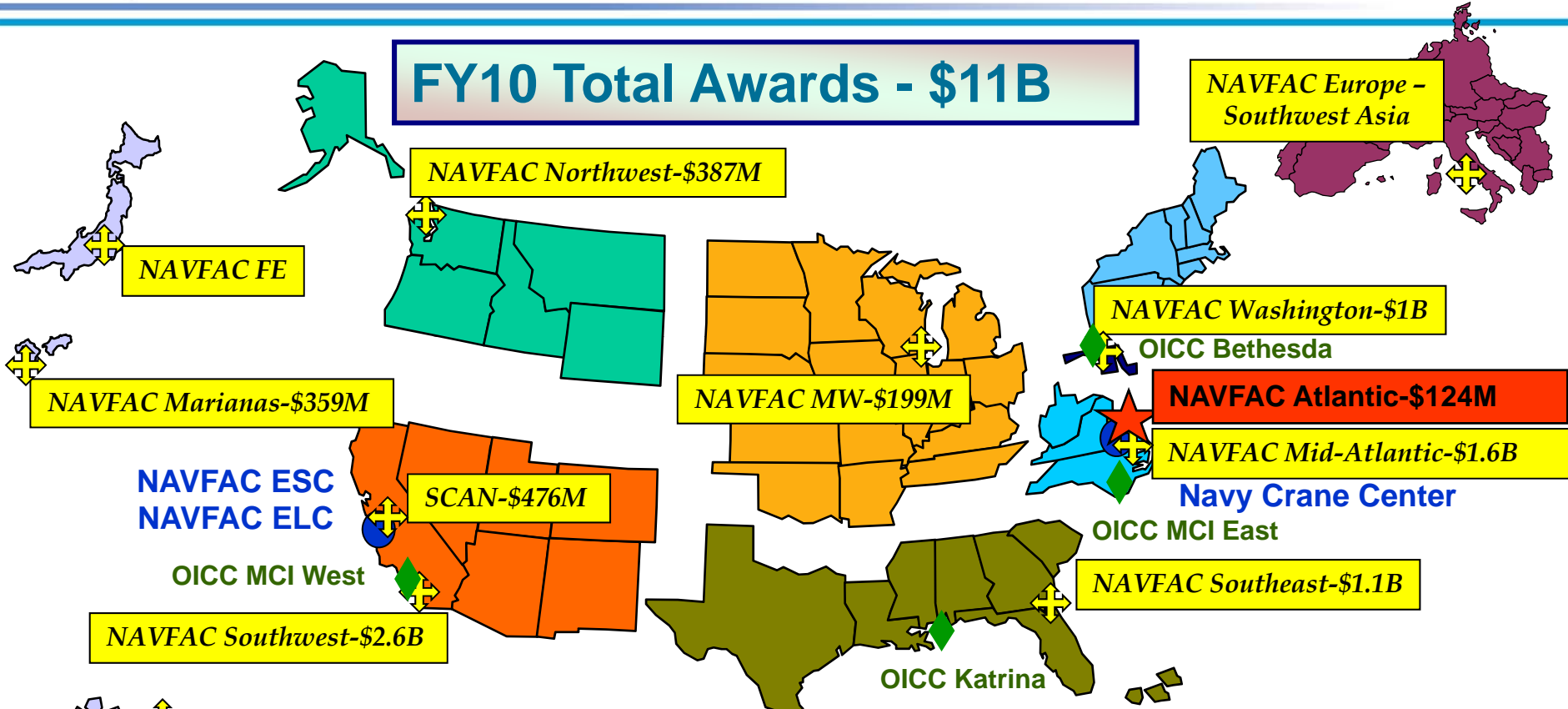


Unprecedented Workload Increase

NAVFAC...Region Focused



FY10 Total Awards - \$11B



| | |
|--|---|
| | 2 ECH III Commands |
| | 10 ECH IV Commands |
| | 4 OICC |
| | 3 Specialty Centers (ECH III Commands) |

Forward Deployed Delivery Model

DoN MILCON - FY11 PresBud Submit

Dept of Navy Highlights



- **Base Operating Support (BOS) \$6.9B**

- 6.7% increase

- **MILCON \$3.9B**

- Historical high (FY07 was \$1.2B)

- 69% USMC, 31% Blue Navy

- Support USMC end-strength of 202,100 active duty

- Investments in alignment w/ Defense Policy Review initiative to relocate Marines from Okinawa to Guam

| FY11 | MCON | MCNR | TOTAL | |
|-------|----------|-------|----------|-----|
| USN | \$1,179M | \$58M | \$1,237M | 31% |
| USMC | \$2,700M | \$20M | \$2,720M | 69% |
| Total | \$3.8B | \$78M | \$3,957M | |

- **Family Housing \$553M**

- Modest increase, inventory largely privatized

- **BRAC \$504M –**

- Outfitting, environmental clean up & caretaker costs

- **SECNAV Energy Goals**

- Energy Security

- Energy Efficiency

- Environmental Stewardship

MILCON Workload



| CATEGORY | % WORKLOAD |
|--------------------------------------|-------------------|
| Maintenance & Production | 16% |
| Unaccompanied Personnel Housing | 14% |
| Land Operational Facilities | 13% |
| Utilities, Land, & Site Improvements | 11% |
| Administrative | 9% |
| Waterfront Operational Facilities | 8% |
| Training Facilities | 8% |
| Community Facilities | 6% |
| Medical Facilities | 6% |
| Other | 9% |

| COMPONENT | % WORKLOAD |
|------------------|-------------------|
| Southwest | 22% |
| Mid-Atlantic | 20% |
| Marianas | 19% |
| Southeast | 12% |
| Washington | 9% |
| Europe | 6% |
| Hawaii | 4% |
| Northwest | 3% |
| Far East | 3% |
| Midwest | 2% |

Navy Shore Energy Program



- **LEED certification for New Construction**
- **Greater than 30% below ASHRAE 90.1-07**
- **Solar hot water - 30% of hot water demand**
- **30% reduction in potable water consumption**
- **50% reduction in potable water for landscaping**
- **Storm water management: projects >5,000 ft² disturbed**
- **Contract award: energy and Total Ownership Cost analysis as evaluation factors**
- **Photovoltaic on total roof replacement projects**



**Bremerton Naval Hospital
Bremerton, WA**

Acquisition Strategy



- **Design-Build remains primary vehicle**
 - Slight shift to more in-house design to enhance/maintain core technical competencies
- **Small Business Contracting**
 - Best Value Source Selection
 - Low price technically acceptable
 - Task order limit raised to \$10M
- **Today's Market - Opportunities**
 - Use of Desirables & Betterments
 - Lower total ownership cost
 - Lower total energy use

Contract Desirable and Betterments



- **Use contract “desirables” and “betterments”, vice options, to obtain in scope project enhancements**
 - Provides more budget flexibility to deal w/ dynamic market
 - Uses contractors’ technical capability & pricing knowledge during BVSS / proposal evaluation stage
- **Desirables – Government identified improvements/enhancements that can be provided within the project budget**
- **Betterments – Contractor identified improvements/enhancements that provide additional quality and/or value to the basic RFP requirement**

BIM for NAVFAC









- **What is Building Information Management (BIM)?**
 - NAVFAC Definition: Life cycle data management approach standardizing processes for planning, design, construction, operation, maintenance & disposal
- **Issues:**
 - Data integration to Maximo and other tools (i.e. iNFADS, RSIMS)
 - NMCI constraints
 - eOMSIs
- **Modeling:**
 - Deploying pilots in three locations (NAVFAC MidLant, SE, & SW)

NAVFAC Small Business Initiatives– FY2011



- **Focused Outreach**
 - **Service-Disabled Veteran Owned Small Businesses.**
 - **Women-Owned Small Business concerns.**
 - **Regional SDVOSB outreach events annually.**
- **For NAVFAC opportunity and program information visit: <https://smallbusiness.navfac.navy.mil>**

NAVFAC SB Achievements

| US Prime Awards | FY09 (Eligible = \$9.3B) | | | FY10* (Eligible = \$8.7B) | | | FY11* (Eligible = \$547.5M) | | |
|---|-----------------------------|---------|--------|------------------------------|----------|--|--------------------------------|----------|--|
| | Target | Dollars | Actual | Target | Dollars | Current | Target | Dollars | Current |
| Small Business (SB) | 41.42% | \$3.2B | 34.81% | 35.61% | \$3.1B | 35.60%  | 36% | \$224.1M | 40.92%  |
| HUBZone | 9.09% | \$1B | 11.02% | 10.20% | \$853M | 9.79% | 10% | \$33.1M | 6.04% |
| Service-Disabled Veteran-Owned (SDVOSB) | 3.00% | \$179M | 1.92% | 3.00% | \$207.4M | 2.38% | 2.50% | \$6.70M | 1.22% |
| Small Disadvantaged Business (SDB) | 19.18% | \$2.2B | 24.12% | 22.67% | \$2.07B | 23.78%  | 23% | \$179.4M | 32.77%  |
| Woman-Owned (WOSB) | 7.53% | \$675M | 7.24% | 5.97% | \$681.2M | 7.82%  | 6.5% | \$42.4M | 7.75%  |

*Data from FPDS-NG 11/21/10. FPDS-NG Data Incomplete.

NAVFAC Small Business Program Office Webpage



- SB Programs
- SB Contacts
- SB Achievements
- Opportunities
 - MILCON Forecast List
 - NAVFAC Contracts with Large Businesses
 - Long Range Acquisition Forecast
- SB Directories
 - SDVOSB & WOSB Directory for Contracting Officer/Prime Contractor Market Research process
- Contract Guidelines
- Events Calendar

NAVFAC
Naval Facilities Engineering Command

Employees Client SEARCH

About Us Document Library Business Opportunities Organization Ask Us Seabees

NAVFAC Business Opportunities

NAVFAC Small Business Programs
NAVFAC Small Business Contacts
NAVFAC Achievements
Opportunities
Small Business Directories
Contracting Guidelines
Events Calendar

VISIT THE NAVFAC AKKA PAGE

VISIT NAVFAC'S SAFETY PAGE

NAVFAC ARRA SMALL BUSINESS ACHIEVEMENTS:
To date, NAVFAC has obligated \$1B of the \$1.9B ARRA funds received. \$415.5, or 40.39%, of these dollars have been awarded to Small Business Concerns.

VETERAN'S ADVOCACY AWARD:
Su Jones, NAVFAC Washington Small Business Deputy, was recognized on July 21 by the Veterans Advocate for her

NAVFAC Small Business Program Office Professional Associations Other Opportunities

Our Commitment
Small businesses, including service disabled veteran-owned small business (SDVOSB), historically underutilized business zone (HUBZone) small business, small disadvantaged business (SDB), and women-owned small business (WOSB) concerns, are a vital part of our economy and help to keep our country the strongest in the world. NAVFAC is committed to the small business, educational institution, and non-profit organization communities having the maximum opportunity to participate in our acquisition program both as prime contractors and subcontractors. Our commitment is demonstrated through increased opportunities for small businesses.

Website Navigation
Use the buttons on the left to find out about NAVFAC's Small Business Programs and how you can do business with us and other Federal Agencies. If you have any questions regarding the information provided herein, please use the Small Business Contacts page to provide your comments. We welcome all comments, questions, and suggestions to improve the information provided.

Home | Careers | FAQs | Ask Us | Search | Accessibility | FOIA | NAVFAC IG | No Fear Act | Sitemap

This is an official U.S. Navy web site. Please read our Privacy Policy. GICS NUMBER: CDD-000-000702

Check it Out !

MILCON Project Solicitation & Award Forecast



- www.navfac.navy.mil
 - [Contracting Information](#)
 - [Opportunities](#)
 - [Acquisition Strategies & Forecasts](#)
 - [MILCON Solicitation & Award Forecast](#)

| MILCON Solicitation/Award Forecast | | | | | | | | | |
|--|----------|--|---------------------------|------------------|-----------------------------------|-----------------------|-------------------|-----------------------------|----------------------|
| FOR PLANNING PURPOSES ONLY | | | | | | | | | |
| This list is not, nor is it intended to be a prediction of what military construction projects may ultimately be solicited. Projects may not be approved, and project specifics may vary prior to solicitation and/or award. Projects not included on this list may be solicited. Dates shown are for advance planning only. See FEDBIZOPS for actual solicitations. | | | | | | | | | |
| Acquisition Method Abbreviation Definitions - BV38: Best Value Source Selection, RFP - LP: Request For Proposal - Low Price & Past Performance, IFB/ICB: Invitation For Bid/International Competitive Bid | | | | | | | | | |
| Responsible Component | P number | Project Name | Activity Name | Design Method | Acquisition Tool | Acquisition Method | Programmed Amount | Projected Solicitation Date | Projected Award Date |
| NAVFAC Europe and SW Asia | FX55 | WATER DISTRIBUTION LINE | NAVSTA ROTA SP | Design Bld Bld | MAC - General | RFP - LP | \$5,100,000 | 24-Nov-2008 | 13-Jan-2009 |
| NAVFAC Europe and SW Asia | 907 | AIRCRAFT MAINTENANCE HANGAR | CAMP LEMONIER DIBOUTI | Design Bld | Global Contingency Const (GCC) | RFP - BVSS (One Step) | \$12,830,000 | 15-Dec-2008 | 20-Mar-2009 |
| NAVFAC Europe and SW Asia | 909 | AIRCRAFT PARKING APRON | CAMP LEMONIER DIBOUTI | Design Bld | Global Contingency Const (GCC) | RFP - BVSS (One Step) | \$15,250,000 | 15-Dec-2008 | 20-Mar-2009 |
| NAVFAC Europe and SW Asia | 910 | TELCOM FACILITY | CAMP LEMONIER DIBOUTI | Design Bld | Global Contingency Const (GCC) | RFP - BVSS (One Step) | \$3,330,000 | 15-Dec-2008 | 20-Mar-2009 |
| NAVFAC Europe and SW Asia | 925 | WATERFRONT DEVELOPMENT PHASE 1 | NAVSUPACT BAHRAIN | Design Bld Bld | Stand Alone Construction Contract | RFP - BVSS (One Step) | \$35,520,000 | 18-Mar-2009 | 30-Jun-2009 |
| NAVFAC Europe and SW Asia | 411 | FUEL STORAGE TANKS & PIPELINE REPLACEMENT | NAVSUPACT SOUDA BAY QR | Design Bld Bld | Stand Alone Construction Contract | RFP - BVSS (One Step) | \$8,000,000 | 18-Mar-2009 | 30-Jun-2009 |
| NAVFAC Europe and SW Asia | FX52 | CHANNEL AND HARBOR DREDGING | NAVSTA ROTA SP | Design Bld Bld | Stand Alone Construction Contract | IFB/ICB | \$34,020,000 | 21-Jun-2009 | 05-Oct-2009 |
| NAVFAC Mariana | 0103 | RECONFIG INTERIOR FOOD #4 FLAG CIRCLE NIMITZ HLL | PWC GUAM | Design Bld | MAC - SA DB | RFP - BVSS (Two Step) | \$342,000 | 25-Jul-2008 | 28-Sep-2008 |
| NAVFAC MS-Atlantic | 175 | WEAPONS MAGAZINES RFLP | NAS BRUNSWICK ME | Design Bld | MAC - LP | RFP - LP | \$8,220,000 | 17-Jan-2009 | 23-Mar-2009 |
| NAVFAC MS-Atlantic | 891 | GLF LAND ACQUISITION INC 1 | NOLF WASHINGTON COUNTY NC | Land Acquisition | MAC - LP | RFP - BVSS (One Step) | \$15,000,000 | 21-May-2007 | 31-Aug-2007 |
| NAVFAC MS-Atlantic | 135 | GLF-BACHELOR ENLISTED QUARTERS | MCAS CHERRY POINT NC | Design Bld | Stand Alone Construction Contract | RFP - BVSS (Two Step) | \$30,100,000 | 11-Nov-2008 | 27-Mar-2009 |
| NAVFAC MS-Atlantic | 112V | MARITIME SUBSURFACE SENSOR OPS FACILITY | NAVAL STATION NEWPORT RI | Design Bld | Stand Alone Construction Contract | RFP - BVSS (One Step) | \$15,320,000 | 13-Nov-2008 | 15-Apr-2009 |
| NAVFAC MS-Atlantic | 223V | RENOVATE V47 FOR COMBAT CRAFT FACILITY | NAVSTA NORFOLK VA | Design Bld | MAC - Industrial | RFP - BVSS (One Step) | \$7,140,000 | 13-Nov-2008 | 31-Mar-2009 |
| NAVFAC MS-Atlantic | 615 | APRON EXPANSION, PHASE 1 | MCB CAMP LEJEUNE NC | Design Bld Bld | Stand Alone Construction Contract | RFP - BVSS (One Step) | \$8,830,000 | 15-Nov-2008 | 30-Mar-2009 |

- Updated monthly
- For planning purposes
- See FEDBIZOPS for actual solicitations

FY10/11 MILCON Projects

FY 10 MCON, MCNR, BRAC V, Defense Project List



| <u>Installation</u> | <u>Title</u> | <u>Cost (\$000)</u> | <u>Design Level</u> |
|-----------------------------|--|---------------------|---------------------|
| ALBANY GA MCLB | MCA HARDSTAND, PHASE 1 | 4,870,000 | DBB |
| ANDERSON AFB GUAM | NORTH RAMP UTILITIES, INC 1 OF 2 | 21,500,000 | DB |
| ANDERSON AFB GUAM | NORTH RAMP PARKING, INC 1 OF 2 | 88,797,000 | DB |
| ANDERSON AFB GUAM | NW Field Combat Support Vehicle Maintenance Facility | 15,500,000 | DB |
| ANDERSON AFB GUAM | NW FIELD ATFP PERIMETER FENCE/ROAD | 4,752,000 | DB |
| ANDERSON AFB GUAM | NW FIELD COMMANDO WARRIOR OPERATIONS FAC (TFI) | 4,200,000 | DB |
| ANDERSON AFB GUAM | CONSTRUCT POSTAL SERVICE CENTER | 3,500,000 | DB |
| ANDERSON AFB GUAM | STRIKE FOL ELECTRICAL INFRASTRUCTURE (TFI) | 33,750,000 | DBB |
| BARKSDALE AFB LA | SECURITY FORCES MILITARY WORKING DOG KENNEL | 1,900,000 | DB |
| BARKSDALE AFB LA | REPAIR AIRCRAFT PARKING APRON | 12,800,000 | DBB |
| BEAUFORT SC MCRD | ELECTRICAL SUBSTATION AND SYSTEM UPGRADE | 6,972,000 | DB |
| BETHESDA MD NATNAVMEDCEN | BRACV-MEDICAL CENTER ADD/ALT - INCR 3 | 80,850,000 | DB |
| BETHESDA MD NATNAVMEDCEN | BRAC-TRAFFIC MITIGATION MEASURES AT WRNMMC Incr 1 | 18,400,000 | DB |
| BREMERTON WA NAVBASE KITSAP | ENCLAVE FENCING/PARKING | 67,419,000 | DBB |
| BRUNSWICK ME NAS | MARINE CORPS RESERVE CENTER | 12,960,000 | DBB |
| CAMP LEJEUNE NC MCB | SOF ACADEMIC INSTRUCTION FACILITY EXPANSION | 11,791,000 | DB |
| CAMP LEJEUNE NC MCB | UTILITY EXPANSION COURTHOUSE BAY | 56,280,000 | DBB |
| CAMP LEMONNIER DJIBOUTI | FIRE STATION | 4,772,000 | DB |
| CAMP LEMONNIER DJIBOUTI | CONSTRUCT ADDITIONAL BERTHING FOR SOCOM | 1,940,000 | DB |
| CAMP LEMONNIER DJIBOUTI | AMMUNITION SUPPLY POINT | 21,689,000 | DBB |
| CAMP LEMONNIER DJIBOUTI | SECURITY FENCING 1 | 8,109,000 | DBB |

FY 10 MCON, MCNR, BRAC V, Defense Project List



| <u>Installation</u> | <u>Title</u> | <u>Cost (\$000)</u> | <u>Design Level</u> |
|--------------------------|---|---------------------|---------------------|
| CAMP PENDLETON CA MCB | ANGLICO OPERATIONS COMPLEX | 25,190,000 | DB |
| CAMP PENDLETON CA MCB | RECONNAISSANCE BN OPERATIONS COMPLEX | 77,660,000 | DB |
| CAMP PENDLETON CA MCB | WFTBN SUPPORT FACILITIES, EDSON RANGE | 15,780,000 | DB |
| CAMP PENDLETON CA MCB | ENLISTED DINING FACILITY, EDSON RANGE | 37,670,000 | DB |
| CAMP PENDLETON CA MCB | EXPANSION OF SRTTP TO 7.5 MGD | 55,180,000 | DB |
| CAMP PENDLETON CA MCB | NORTH REGIONAL TERTIARY TREATMENT PLANT | 112,330,000 | DB |
| CAMP PENDLETON CA MCB | GAS/ELECTRICAL UPGRADES | 51,040,000 | DB |
| CAMP PENDLETON CA MCB | BACHELOR ENLISTED QUARTERS, LAS FLORES | 39,610,000 | DB |
| CAMP PENDLETON CA MCB | RECRUIT BARRACKS, EDSON RANGE | 53,320,000 | DB |
| CAMP PENDLETON CA MCB | ENLISTED DINING FACILITY | 32,300,000 | DB |
| CAMP PENDLETON CA MCB | RECRUIT BARRACKS, FIELD/K-SPAN | 23,200,000 | DB |
| CAMP PENDLETON CA MCB | COMMUNICATIONS UPGRADES | 79,492,000 | DB |
| CAMP PENDLETON CA MCB | ELECTRICAL DISTRIBUTION SYSTEM | 76,950,000 | DB |
| CAMP PENDLETON CA MCB | COMM/ELEC MAINTENANCE FACILITIES | 13,170,000 | DBB |
| CHARLESTON AFB SC | RED HORSE HQ AND ENGINEERING FACILITY | 3,400,000 | DBB |
| CHARLESTON SC NAVWPNSSTA | (ARMY)-DEPLOYMENT STAGING AREA PAVING, FENCING AND LIGHTING | 4,100,000 | DBB |
| CHARLESTON SC NAVWPNSSTA | (ARMY)-RAILROAD TRACKS | 12,000,000 | DBB |
| CHARLESTON SC NAVWPNSSTA | (ARMY)-EXPAND FINGER PIER AND CONSTRUCT RAMPS | 5,700,000 | DBB |
| CHINA LAKE CA NAWS | F-35 EDWARDS RAMP EXTENSION (EDWARDS AFB) | 3,007,000 | DB |
| CORONADO CA NAVBASE | MSTRON3 SQUADRON OPERATIONS FACILITY | 1,910,000 | DB |
| CRANE IN NSA | STRATEGIC WEAPONS SYSTEM ENGINEERING | 13,710,000 | DB |

FY 10 MCON, MCNR, BRAC V, Defense Project List



| <u>Installation</u> | <u>Title</u> | <u>Cost (\$000)</u> | <u>Design Level</u> |
|------------------------------|---|---------------------|---------------------|
| DAHLGREN VA NAVSUPFAC | AEGIS BALLISTIC MISSILE DEFENSE FACILITY EXPANSION | 24,500,000 | DB |
| DAM NECK VA NAVSPECWARDEVGRU | SOF OPERATIONS FACILITY - Increment 3 of 3 | 15,967,000 | DB |
| EL CENTRO CA NAF | AIRCRAFT DIRECT FUELING STATION | 11,000,000 | DBB |
| EVERETT WA NAVSTA | SPECIALIZED SERE TRAINING AREA | 12,707,000 | DB |
| EVERETT WA NAVSTA | SMALL CRAFT LAUNCH | 3,810,000 | DB |
| FALLON NV NAS | WARRIOR PHYSICAL TRAINING FACILITY (FITNESS CENTER) | 10,670,000 | DBB |
| FORT WORTH TX NAS JRB | REPLACE JOINT BASE COMMUNICATIONS BLDG | 6,170,000 | DB |
| GUAM DEFENSE INSTALLATION | REPLACE GAS CYLINDER STORAGE FACILITY | 4,900,000 | DBB |
| GUAM NAVBASE | MILITARY WORKING DOG RELOCATION, APRA HARBOR | 14,000,000 | DB |
| GUAM NAVBASE | APRA HARBOR WHARF IMPROVEMENTS, PHASE 1 | 127,033,000 | DB |
| GUAM NAVBASE | DEFENSE ACCESS ROAD IMPROVEMENTS | 48,860,000 | DB |
| GUAM NAVBASE | APRA MEDICAL CLINIC | 96,000,000 | DBB |
| GUAM NAVBASE | WATERFRONT HEADQUARTERS BUILDING | 24,800,000 | DBB |
| GUAM NAVBASE | FIRE STATION FINEGAYAN | 25,100,000 | DBB |
| GUANTANANO BAY CUBA NAVSTA | REPLACE FUEL STORAGE TANK | 12,500,000 | DBB |
| GUANTANANO BAY CUBA NAVSTA | BULKHEAD REPAIR | 2,200,000 | DBB |
| HICKAM AFB HI | CONSTRUCT GROUND CONTROL TOWER | 4,000,000 | DB |
| INDIAN ISLAND WA NAVMAG | ORDNANCE STORAGE PADS WITH COVERS (2) | 13,130,000 | DB |
| JACKSONVILLE FL NAS | P-8A (MMA) FACILITIES MODIFICATION | 5,917,000 | DBB |
| KESSLER AFB MS | AERIAL PORT FACILITY | 9,800,000 | DBB |
| KINGSVILLE TX NAS | RENEWABLE ENERGY DEMO PROJECT - SOLAR PANEL ARRAY | 4,470,000 | DB |

FY 10 MCON, MCNR, BRAC V, Defense Project List



| <u>Installation</u> | <u>Title</u> | <u>Cost (\$000)</u> | <u>Design Level</u> |
|-------------------------|--|---------------------|---------------------|
| LITTLE CREEK NAVPHIBASE | SOF SUPPORT ACTIVITY (SUPPACT) OPERATIONS FACILITY | 18,669,000 | DB |
| LOS ANGELES AFB CA | CONSOLIDATED PARKING AREA, PHASE 1 | 8,000,000 | DB |
| MAYPORT FL NAVSTA | FITNESS CENTER ADDITION, MAYPORT | 26,360,000 | DB |
| MAYPORT FL NAVSTA | CHANNEL DREDGING | 46,303,000 | DBB |
| MONTEREY CA NSA | MARINE METEOROLOGY CENTER | 10,240,000 | DB |
| NEWPORT RI NAVSTA | RENOVATION OF SENIOR ENLISTED ACADEMY (BLDG 1269) | 10,550,000 | DBB |
| NEWPORT RI NAVSTA | RENOVATIONS TO PERRY HALL (NAPS TRAINING SUPPORT SPACE) | 8,530,000 | DBB |
| NORFOLK VA NAVSTA | E-2D AIRCREW TRAINER FACILITY | 11,737,000 | DB |
| NORFOLK VA NSA | AUTOMOTIVE ORGANIZATIONAL SHOP | 1,990,000 | DBB |
| NORFOLK VA NSA | COMMISSARY UTILITIES | 2,000,000 | DBB |
| NORTH POTOMAC NSA | RDT&E SUPPORT FACILITY | 6,520,000 | DB |
| OCEANA VA NAS | C-40 HANGAR | 30,400,000 | DB |
| OCEANA VA NAS | SOF CAFETERIA | 14,170,000 | DB |
| PATUXENT RIVER MD NAS | SPECIAL COMMUNICATIONS REQUIREMENTS ENGINEERING FACILITY | 11,043,000 | DB |
| PEARL HARBOR HI NAVSTA | SUB DRIVE-IN MSF, BECKONING POINT INC 3 OF 3 | 8,645,000 | DB |
| PEARL HARBOR HI NAVSTA | PRODUCTION SERVICES SUPPORT FACILITY | 25,070,000 | DB |
| POINT LOMA CA NAVBASE | PUBLIC WORKS SHOPS CONSOLIDATION | 8,730,000 | DB |
| POINT LOMA CA NAVBASE | REPLACE FUEL STORAGE FACILITIES - Increment 2 | 92,300,000 | DB |
| POINT LOMA CA NAVBASE | ADD/ALTER MARINE MAMMAL SURGICAL CENTER | 2,330,000 | DB |

FY 10 MCON, MCNR, BRAC V, Defense Project List



| Installation | Title | Cost (\$000) | Design Level |
|----------------------------------|---|--------------|--------------|
| QUANTICO VA MCB | MC INFORMATION OPERATIONS CENTER | 29,620,000 | DB |
| QUANTICO VA MCB | SOUTH MAINSIDE ELECTRICAL SUBSTATION | 15,270,000 | DB |
| ROTA SPAIN NAVSTA | PROVIDE RECEPTION AIRFIELD FACILITIES | 26,278,000 | DBB |
| SAN DIEGO CA MARCORPRCUIITDEP | MESSHALL EXPANSION | 23,590,000 | DB |
| SAN DIEGO CA NAVPHIBASE CORONADO | SOF INDOOR RANGE FACILITY | 15,722,000 | DB |
| SHAW AFB SC | BRAC-HEADQUARTERS BUILDING, THIRD US ARMY-Incr 2 | 55,000,000 | DB |
| SHAW AFB SC | ADD/ALTER USAFCENT HEADQUARTERS | 21,183,000 | DB |
| SOUTH POTOMAC NSA | ELECTROMAGNETIC RESEARCH & ENGINEERING FAC ADDITION PHASE 2 | 3,660,000 | DB |
| SUGAR GROVE WV NIOC | EMERGENCY SERVICES CENTER | 10,990,000 | DB |
| TRAVIS AFB CA | KC-10 CARGO LOAD TRAINING (CLT) FACILITY | 6,900,000 | DB |
| TRAVIS AFB CA | REPLACE FUEL DISTRIBUTION SYSTEM | 15,357,000 | DBB |
| TRAVIS AFB CA | CONSTRUCT TAXIWAY MIKE BYPASS ROAD | 6,000,000 | DBB |
| TWENTYNINE PALMS CA MCAGCC | BACHELOR ENLISTED QUARTERS, 1ST TANKS | 37,290,000 | DB |
| TWENTYNINE PALMS CA MCAGCC | ARMORY, 1ST TANKS | 12,670,000 | DB |
| TWENTYNINE PALMS CA MCAGCC | WATER IMPROVEMENTS AND STORAGE TANK | 30,610,000 | DBB |
| TWENTYNINE PALMS CA MCAGCC | SEWAGE SYSTEM IMPROVEMENTS | 5,800,000 | DBB |
| TWENTYNINE PALMS CA MCAGCC | HTHW/CHILLED WATER SYSTEM | 25,790,000 | DBB |
| TWENTYNINE PALMS CA MCAGCC | NATURAL GAS SYSTEM EXTENSION | 19,990,000 | DBB |
| TWENTYNINE PALMS CA MCAGCC | CONSTRUCT ROADS, NORTH MAINSIDE | 29,360,000 | DBB |

FY 10 MCON, MCNR, BRAC V, Defense Project List



| <u>Installation</u> | <u>Title</u> | <u>Cost (\$000)</u> | <u>Design Level</u> |
|----------------------------|---|---------------------|---------------------|
| TWENTYNINE PALMS CA MCAGCC | INDUSTRIAL WASTE WATER IMPROVEMENTS | 3,330,000 | DBB |
| TWENTYNINE PALMS CA MCAGCC | LAYDOWN SITE WORK, NORTH MAINSIDE | 21,740,000 | DBB |
| TWENTYNINE PALMS CA MCAGCC | SECONDARY ELEC DISTRIBUTION, NORTH MAINSIDE | 31,720,000 | DBB |
| TWENTYNINE PALMS CA MCAGCC | COMMISSARY, MWTC | 6,830,000 | DBB |
| WHIDBEY ISLAND WA NAS | RELOCATE SECURITY | 2,660,000 | DB |
| WHITING FIELD FL NAS | BEQ EOD SCHOOL, PHASE 2 | 26,287,000 | DB |
| WHITING FIELD FL NAS | T-6B JPATS TRAINING OPS PARALOFT FACILITY | 4,120,000 | DBB |

FY 11 MCON, MCNR, BRAC V, Defense Project List



| <u>Installation</u> | <u>Title</u> | <u>Cost (\$000)</u> | <u>Design Level</u> |
|-----------------------------|---|---------------------|---------------------|
| ANDERSON AFB GUAM | PRTC-COMBAT COMMUNICATIONS OPERATIONS FACILITY | 9,200,000 | DB |
| ANDERSON AFB GUAM | PRTC-COMMANDO WARRIOR OPEN BAY BARRACKS (TFI) | 11,800,000 | DB |
| ANDERSON AFB GUAM | NORTH RAMP PARKING, ANDERSEN AFB, INC 2 OF 2 | 93,588,000 | |
| ANDERSON AFB GUAM | GUAM STRIKE OPS GROUP (TFI) | 9,100,000 | |
| ANDERSON AFB GUAM | PRTC-RED HORSE HQ/ENG FAC | 8,000,000 | |
| ANDERSON AFB GUAM | GUAM STRIKE SOUTH RAMP UTILITIES PHASE 1 | 12,200,000 | |
| ANDERSON AFB GUAM | NORTH RAMP UTILITIES, ANDERSEN AFB, INC 2 of 2 | 79,350,000 | |
| ANDREWS AFB MD | REPLACE BULK FUEL PUMPHOUSE AND TRANSFER LINE | 18,076,000 | DBB |
| ATSUGI JA NAF | AVIATION SIMULATOR TRAINING FACILITY | 6,908,000 | DB |
| AVIANO AB ITALY | DORMITORY (RM 144) | 19,000,000 | DB |
| AVIANO AB ITALY | AIR SUPPORT OPERATIONS SQUADRON FACILITY | 9,500,000 | DBB |
| BAHRAIN NSA | WATERFRONT DEVELOPMENT, PHASE 3 | 63,871,000 | DBB |
| BAHRAIN NSA | NAVCENT AMMUNITION MAGAZINES | 89,280,000 | DBB |
| BARKSDALE AFB LA | WEAPONS LOAD CREW TRAINING FACILITY | 18,300,000 | DB |
| BARKSDALE AFB LA | MISSION SUPPORT GROUP COMPLEX | 24,000,000 | |
| BEAUFORT SC MCAS | TRAINING AND SIMULATOR FACILITY | 46,240,000 | DBB |
| BEAUFORT SC MCAS | F-35B AIRCRAFT HANGAR FOR FRS-2 | 46,550,000 | DBB |
| BETHESDA MD NATNAVMEDCEN | BRAC-TRAFFIC MITIGATION MEASURES AT WRNMMC Incr 2 | 7,600,000 | DB |
| BOLLING AFB DC | JOINT AIR DEFENSE OPERATIONS CENTER | 13,200,000 | DB |
| BREMERTON WA NAVBASE KITSAP | WATERFRONT RESTRICTED AREA EMERGENCY POWER | 24,913,000 | DB |
| BREMERTON WA NAVBASE KITSAP | CSDS-5 LABORATORY EXPANSION PHASE 1 | 16,170,000 | DB |
| BREMERTON WA NAVBASE KTISAP | LIMITED AREA PRODUCTION/STRG CMLPX INC 7 OF 7 | 19,116,000 | DBB |

FY 11 MCON, MCNR, BRAC V, Defense Project List



| <u>Installation</u> | <u>Title</u> | <u>Cost (\$000)</u> | <u>Design Level</u> |
|-------------------------|--|---------------------|---------------------|
| CAMP LEJEUNE NC MCB | BACHELOR ENLISTED QUARTERS, COURTHOUSE BAY | 40,780,000 | DB |
| CAMP LEJEUNE NC MCB | MESS HALL, FRENCH CREEK | 25,960,000 | DB |
| CAMP LEJEUNE NC MCB | BACHELOR ENLISTED QUARTERS, RIFLE RANGE | 55,350,000 | DB |
| CAMP LEJEUNE NC MCB | BACHELOR ENLISTED QUARTERS, FRENCH CREEK | 43,640,000 | DB |
| CAMP LEJEUNE NC MCB | BACHELOR ENLISTED QUARTERS, CAMP JOHNSON | 46,550,000 | DB |
| CAMP LEJEUNE NC MCB | BACHELOR ENLISTED QUARTERS, WALLACE CREEK NORTH | 51,660,000 | DB |
| CAMP LEJEUNE NC MCB | ARMORY II MEF, WALLACE CREEK | 12,280,000 | DB |
| CAMP LEJEUNE NC MCB | BACHELOR ENLISTED QUARTERS, WALLACE CREEK NORTH | 46,290,000 | DB |
| CAMP LEJEUNE NC MCB | REPLACE SCHOOL BY ADDITION TO TARAWA TERRACE II ES | 16,654,000 | DB |
| CAMP LEJEUNE NC MCB | MARINE CORPS ENERGY INITIATIVE | 9,950,000 | DB |
| CAMP LEJEUNE NC MCB | MESS HALL ADDITION, COURTHOUSE BAY | 2,553,000 | DBB |
| CAMP LEJEUNE NC MCB | UTILITY EXPANSION, FRENCH CREEK | 56,050,000 | DBB |
| CAMP LEMONNIER DJIBOUTI | HEADQUARTERS FACILITY | 12,407,000 | DB |
| CAMP LEMONNIER DJIBOUTI | GENERAL WAREHOUSE | 7,324,000 | DBB |
| CAMP PENDLETON CA MCAS | CNAT/FRS AVIATION TRAINING AND BEQ | 66,110,000 | DB |
| CAMP PENDLETON CA MCB | CONVEYANCE/WATER TREATMENT | 100,700,000 | DB |
| CAMP PENDLETON CA MCB | TRUCK COMPANY OPERATIONS COMPLEX | 53,490,000 | DB |
| CAMP PENDLETON CA MCB | TERTIARY TREATMENT/CONVEYANCE INC 2 OF 3 | 30,000,000 | DB |
| CAMP PENDLETON CA MCB | BACHELOR ENLISTED QUARTERS, LAS FLORES | 37,020,000 | DB |
| CAMP PENDLETON CA MCB | MARINE CORPS ENERGY INITIATIVE | 9,950,000 | DB |
| CHARLESTON AFB SC | CIVIL ENGINEER COMPLEX (TFI)-PHASE 1 | 15,000,000 | DB |

FY 11 MCON, MCNR, BRAC V, Defense Project List



| <u>Installation</u> | <u>Title</u> | <u>Cost (\$000)</u> | <u>Design Level</u> |
|-----------------------------------|--|---------------------|---------------------|
| CHERRY POINT NC MCAS | MARINER'S BAY LAND ACQUISITION BOGUE | 3,790,000 | |
| CORONADO CA NAVBASE | ROTARY HANGAR | 67,160,000 | DBB |
| GUAM NAVBASE | FINEGAYAN SITE PREP AND UTILITIES, PHASE 1 | 147,210,000 | DB |
| GUAM NAVBASE | DEFENSE ACCESS ROADS | 66,730,000 | |
| GUAM NAVBASE | WHARF IMPROVEMENTS APRA HARBOR INC 2 OF 2 | 40,000,000 | |
| GUAM NAVHOSP | HOSPITAL REPLACEMENT | 140,400,000 | DBB |
| HAWAIIAN AREA HI PACMISRANFAC | AEGIS ASHORE (AA) MISSILE DEFENSE TEST COMPLEX | 68,500,000 | DBB |
| KANEOHE HI MCB | BACHELOR ENLISTED QUARTERS | 90,530,000 | DB |
| KINGS BAY GA SUBBASE | SECURITY ENCLAVE AND VEHICLE BARRIER | 45,004,000 | DBB |
| KINGS BAY GA SUBBASE | WATERFRONT EMERGENCY GENERATORS | 15,660,000 | DBB |
| MIRAMAR CA MCAS | PARKING APRON/TAXIWAY EXPANSION | 66,500,000 | DB |
| MIRAMAR CA MCAS | GTF-HANGAR MODIFICATION (HMT-302) | 90,490,000 | DB |
| NEW ORLEANS LA HQ MARDIV | VEHICLE MAINTENANCE FACILITY | 13,920,000 | DB |
| NEWPORT RI NAVSTA | ELECTROMAGNETIC SENSOR FACILITY | 27,007,000 | DBB |
| NORFOLK VA FISC | REPLACE FUEL PIER | 58,000,000 | DBB |
| NORFOLK VA NAVSTA | PIER 1 UPGRADES TO BERTH USNS COMFORT | 10,035,000 | DBB |
| PEARL HARBOR HI NAVSTA | SOF SEAL DELIVERY TEAM FACILITY | 31,000,000 | DB |
| PEARL HARBOR HI NAVSTA | CENTER FOR DISASTER MANAGEMENT/HUMANITARIAN ASSISTANCE | 9,140,000 | |
| POINT MUGU CA NAVBASE VENTURA CTY | AIRCRAFT DIRECT FUELING STATIONS | 3,000,000 | DB |
| QUANTICO VA MCB | ADDITION, MCU RESEARCH CENTER | 66,240,000 | DB |
| QUANTICO VA MCB | SNCO ACADEMIC FACILITY ADDITION | 12,080,000 | DB |
| QUANTICO VA MCB | CONSTRUCT CONSOLIDATED ELEMENTARY SCHOOL | 47,355,000 | DB |

FY 11 MCON, MCNR, BRAC V, Defense Project List



| <u>Installation</u> | <u>Title</u> | <u>Cost (\$000)</u> | <u>Design Level</u> |
|-------------------------------|---|---------------------|---------------------|
| ROTA SPAIN NAVSTA | AIR TRAFFIC CONTROL TOWER | 23,190,000 | DBB |
| SAN DIEGO CA FISC | REPLACE FUEL STORAGE FACILITIES INC 3 OF 3 | 20,000,000 | |
| SAN DIEGO CA MARCORPRCUIITDEP | MARINE CORPS ENERGY INITIATIVE | 9,950,000 | DB |
| SAN DIEGO CA NAVBASE | BACHELOR QUARTERS HOMEPORT ASHORE | 75,342,000 | DB |
| TRAVIS AFB CA | C-5SQUADRON OPERATIONS & AIRCRAFT MAINTENANCE FAC | 7,000,000 | DBB |
| TWENTYNINE PALMS CA MCAGCC | BACHELOR ENLISTED QUARTERS/PARKING STRUCTURE | 53,158,000 | DB |
| YUMA AZ MCAS | INTERMEDIATE MAINT ACTIVITY FACILITY | 21,480,000 | DB |
| YUMA AZ MCAS | COMMUNICATION INFRASTRUCTURE UPGRADE | 63,730,000 | DBB |
| YUMA AZ MCAS | UTILITY UPGRADES | 44,320,000 | DBB |
| YUMA AZ MCAS | AIRCRAFT MAINTENANCE HANGAR INC 2 OF 2 | 40,600,000 | DBB |
| YUMA AZ MCAS | SIMULATOR FACILITY | 36,060,000 | DBB |
| YUMA AZ MCAS | VAN PAD RELOCATION | 15,590,000 | DBB |